

ARCHITECTURE+DESIGN

A N I N D I A N J O U R N A L O F A R C H I T E C T U R E

COMMERCIAL AND RETAIL SPACES



ASHA SAIRAM

GS MAHABOOB BASHA AND
SHALINI CHANDRASHEKAR

LI XIANG

LUKAS RUNGER

PRIYA DOON

ROSHNI KSHIRSAGAR

CREATING DESIGN MARVELS

Arun Sharma



CONTENTS

— ARCHITECTURE+DESIGN —



40 **A Kaleidoscope of the Past**

Goldene Rose, Germany
noa network of architecture*

48 **Rustic Resonance**

Poetry in Bricks, Ahmedabad
Achutam Designs

56 **A Futuristic World of Pop Toys**

Popmart Global Flagship Store, China
X+Living

64 **A Dialogue Between People, Spaces & Objects**

Talesyn 123 Studio, Bengaluru
Talesyn

72 **Envision your Dream Home**

Terra Interiors Experience Center, Gurugram
The Picturesque Studio

79 **ADVERTORIAL**

Reimagine Outdoor Spaces
Disha Pavers



80 **Fostering Creativity**

Urban Zen Office
Urban Zen

86 **Contemporising Craft in the WorkSpace**

Tiltegal, Gurugram
Studio Lotus

94 **PROJECT FEATURES**

Smart, Innovative Design

Residential Apartment
Inspiration-The Design Avenue, Nagpur

CONCEPT

96 **A Blueprint for Sustainable Cities**



The original Posture Care® Mattress

Quietly chosen by the discerning for three decades

for a good night's sleep,

The Heart of your Bed is the Mattress. And you spend a third of life on it.

Snoozer Posture Care Mattress is preferred by people who find a firm surface too uncomfortable to sleep & on the other hand don't like the "sink-in" feel of a soft mattress.

Neither too hard. Nor too soft. You fall asleep quickly and stay in deep sleep for a long time.

Invest in this medium firm mattress for a more luxurious comfort and quality healthy sleep.

Ahmedabad | Agra | Bangalore | Chandigarh | Chennai | Coimbatore | Dehradun | Delhi | Goa | Gurgaon | Hyderabad
Jaipur | Jalandhar | Ludhiana | Madurai | Mangalore | Mumbai | Pune | Surat

Snoozer@HomeTrial | Interior Designer Collaboration | Dealership Queries ☎️ 84279 62222 sleep@snoozer.in
India's oldest fine luxury mattress company. Know more with credible reviews on www.snoozer.in



A DIALOGUE BETWEEN PEOPLE, SPACES & OBJECTS

Project: Tallesyn 123 Studio, Bengaluru. **Architects:** Tallesyn

A quiet reflection of the architectural firm's ideologies and work ethos, the new studio for Tallesyn takes a sensitive design approach that enables fluidity across the space

A decade-old architectural practice in Bengaluru, Tallesyn is representative of a design ideology that harbours creation and collaboration, experimental material palette and sensitivity towards the changing post-pandemic world. Their new studio space in Bengaluru is a quiet reflection of their ideologies and work ethos. The design language is choreographed in a minimalist manner to evoke a culture of inspiration, creation and collaboration while fostering the unconventional studio workings. Located in the southern side of Bengaluru, the space draws attention to the existing foliage and context through vernacular concepts and biophilic inclusions.

Spread across an area of 2,400 sq ft, the existing site conditions dictate the overall spatial narrative based on the hierarchy of privacy and a fluid, open-built relationship. Arranged perpendicular to the central court is the two-storey studio space



The site embodies the pedigree of the design studio that takes a sensitive design approach, embracing materials in the construction process, while enabling a controlled fluidity across spaces.

experience, internal volumes are staggered to augment visual connections across the studio, pushing the envelope of collaborative learning. The vast expanse of the studio space can be perceived from a single point of entry with dedicated workstations, a powder room on the ground floor, and a mezzanine discussion area on the first. Taking centre stage in the interiors is a sage green circular metal staircase that is envisioned to reflect the colours of the surrounding landscape.

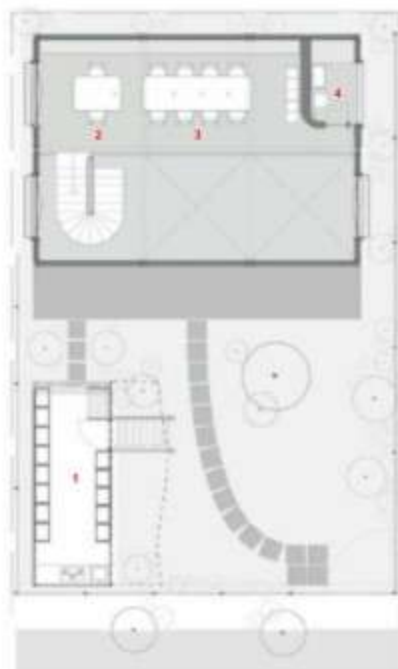
Built on metal frames, the upper floor is a private sanctuary for the founders and doubles up as a conference and meeting space. However, there is no envelope segregating it from the rest of the studio. Instead, the staircase railing extends further to form a parapet on the mezzanine, overlooking the ground floor activities and the solid bilateral facade. The wall



GS MAHABOOB BASHA

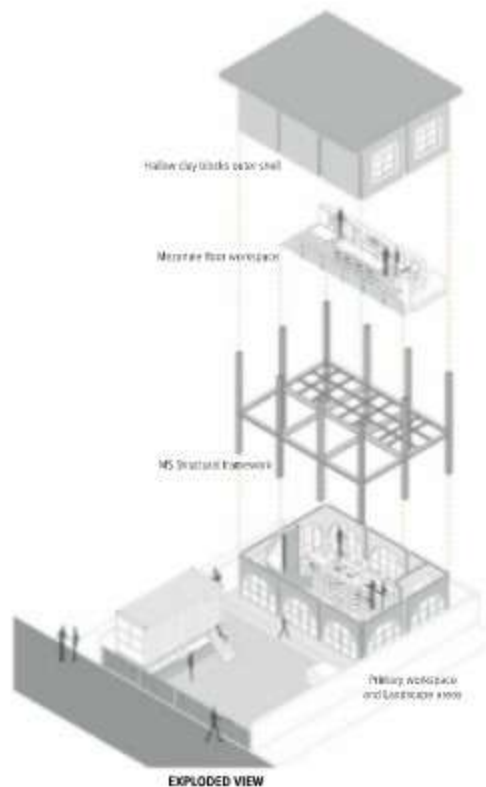
Principal Architect and Co-Founder,
Taliesyn - Design & Architecture

GS Mahaboob Basha, is a practicing architect with a degree from B.V.B college, Hubli. Having previously worked for more than a decade with Vinu Ponnappa architects, Bangalore, on various projects of different scales in hospitality, institutional, commercial and residential, went onto establish jointly TALIESYN in Bangalore in the year 2010. Backed by the practical knowledge, the architect's forte lies in construction techniques and details.



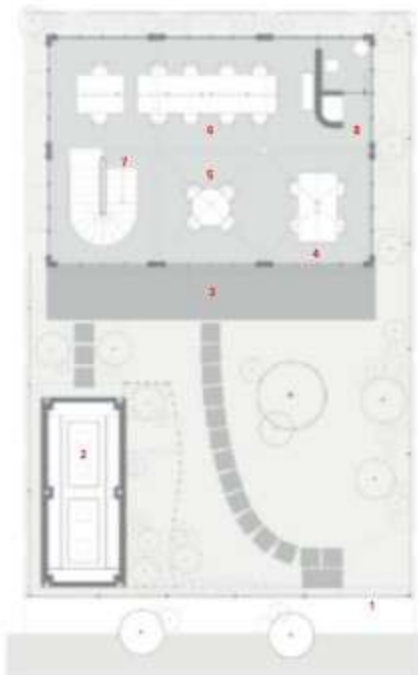
FIRST FLOOR PLAN

1. MATERIAL LIBRARY & PANTRY
2. PONDON, ARCHITECT'S DESK
3. CONFERENCE
4. TOILET



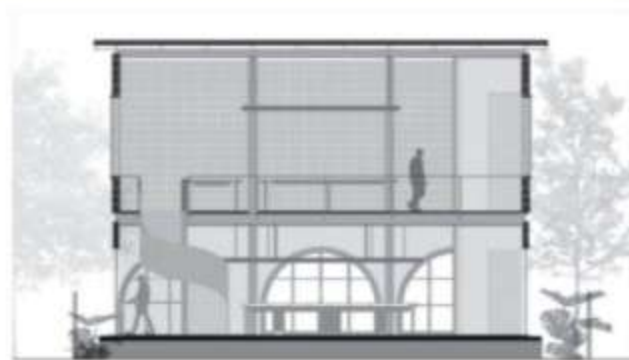
EXPLODED VIEW





GROUND FLOOR PLAN

- | | |
|--------------------|--------------|
| 1. ENTRANCE | 5. LOBBY |
| 2. DINING AREA | 6. WORKSPACE |
| 3. STUDIO ENTRANCE | 7. STAIRCASE |
| 4. ADMIN | 8. TOILET |



SECTIONS

along the North-South axis and the material library along the East-West. Garnered from the practice of interactive learning and dialogue, the overall planning encompasses a blend of open and semi-open landscape areas that offer respite from the built.

The Built

Blurring the boundaries between the built and open spaces, embraces the biophilic philosophy of the studio. Anchored by a bold exposed framework that forms the structural skeleton, the main studio space encompasses a series of semi-circular arches and built-in metal sections. The double-storey studio space viewed on the exterior by a single tall facade, is broken by volumes on the inside. This single-storey facade is bifurcated horizontally by terracotta blocks on the upper hall, and cement arched panels on the lower, while the metal sections homogeneously reinforce the beautiful juxtaposing materiality of the two. Concurrently, the combination of these materials offers visual interest, and porosity to break from the heat and allow cross-ventilation.

Displaying a stark contrast from the external





at that level, built with terracotta blocks, is percolated with reclining windows that breathe in daylight and fresh air, while its elevated level grants it the required privacy. The washrooms at both levels are camouflaged on the extreme right end, and are treated as a tall mass with the same finishes as the wall.

Maximising natural resources, the alluring terrazzo floors on the ground level are cast on-site using recycled broken chips. At the same time, all the furniture echoes a minimalist design sensibility, with all the work desks, chairs, and tables crafted on-site with birch ply perched on metal legs. A simple flat roof on top is built in three layers which house a widespread system of solar panels that meets all the electricity needs of the studio, a small step towards reducing their carbon footprint. A rainwater harvesting system is incorporated to reinforce their beliefs for a sustainable future. The material library, originally a shipping container, is retrofitted into the new workspace to build a space that engages the designers to explore, introspect and research the materiality of their projects.

Landscape Nucleus

The prevailing site conditions offered opportunities to conceptualise around the exciting foliage, where



Blurring the boundaries between the built and open spaces embraces the biophilic philosophy of the studio. Anchored by a bold exposed framework that forms the structural skeleton, the main studio space encompasses a series of semi-circular arches and built-in metal sections.

an existing Indian Beech tree (native Honge Maria) takes the focal point flanked by the built on the South and West sides. The overall site is spatially zoned into spaces for social interaction in the open and semi-open landscape spaces, material research and experimentation, and the studio space. Forming the first entry is the central court, a beautifully landscaped garden laden with a pathway made from stone tiles that gradually bleeds into the built. Spaces that are holistically weaved create an ambience that embraces the materials' honest untreated characteristics and maximises their natural physical properties—a Taliesynian form of self-expression.

An array of levels have been conceived in the open court, with a semi-open area stilted below the material library being a recessed seating and dining area, made from hollow terracotta blocks and recycled materials from the site, creating patterns and textures to alleviate spatial curiosity. The premises open to a landscaped front yard, acting as an inviting space for collaboration, gathering, informal events and social activities. The lack of any ornate material finishes exhibit the inherent aesthetics of the materials—a sustainable approach manifested in Taliesyn's ideologies and ethos.

The site embodies the pedigree of the design studio that takes a sensitive design approach, embracing materials in the construction process, while enabling a controlled fluidity across spaces. Building on a sense of nostalgia to connect the old studio and new, this simplistic workspace indicates the collaborative effort interwoven in the studio's identity as a practice. The studio for Taliesyn continues to create an engaging dialogue between people, spaces, and objects in an honest and sublime way.

Photo credit: Niveditha Gupta

FACTFILE

Principal Architect: GS Mahabub Basha, Shalini Chandrashekar
Design Team: Sripoornika, Srirajeevi, Basha, Vishnu Raj
Site Area: 7,400 sq ft
Built-Up Area: 1,920 sq ft
Year of completion: 2021



SHALINI CHANDRASHEKAR

Principal Architect and Co-Founder,
Taliesyn — Design & Architecture

Shalini Chandrashekar, a practicing designer with a specialized degree in Interior spatial design, jointly heads the design practice TALIESYN based in Bangalore established in 2010. Having worked in design firms like VPAPL, Bangalore and D+A architects, Bangalore, on their various prestigious projects including residential and hospitality, TALIESYN is reflection of the design principles carried forward from the experiences. Apart from architectural design, the designer also has collaborated with other designers in the field of product and furniture design.

